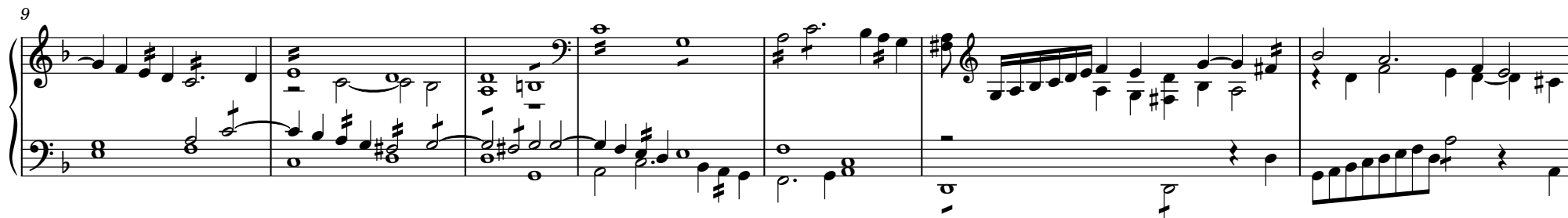


# Gibbons 'double organ' Fancy transposed to G



30



System 1 (Measures 30-35): The right hand features a melodic line with eighth and sixteenth notes, often beamed together. The left hand provides a steady accompaniment with eighth notes and chords. The key signature has one flat (B-flat).

36



System 2 (Measures 36-42): The right hand continues the melodic development with some longer note values. The left hand maintains a rhythmic pattern of eighth notes and chords. The key signature remains one flat.

43



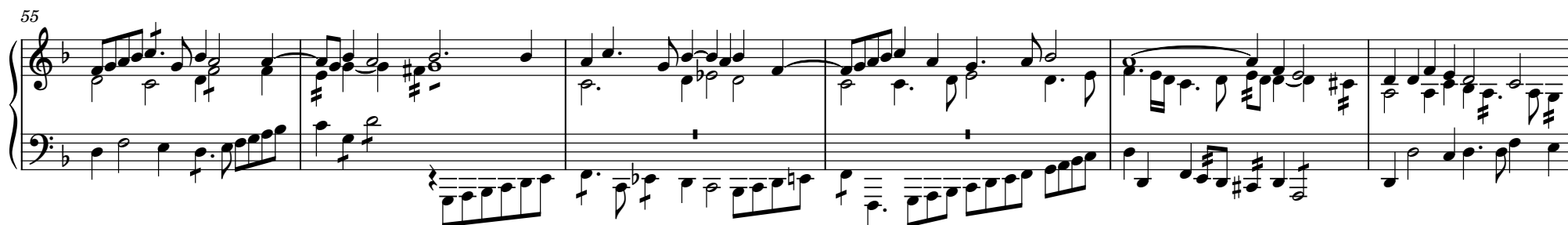
System 3 (Measures 43-48): The right hand has a more active melodic line with frequent sixteenth notes. The left hand accompaniment is consistent with eighth notes and chords. The key signature remains one flat.

49



System 4 (Measures 49-54): The right hand features a melodic line with some rests. The left hand has a more complex accompaniment with sixteenth notes and chords. The key signature changes to two flats (B-flat and E-flat) at measure 52.

55



System 5 (Measures 55-60): The right hand has a melodic line with some rests. The left hand features a more complex accompaniment with sixteenth notes and chords. The key signature remains two flats.

61

Measures 61-65 of a musical score. The key signature has one flat (B-flat). The melody in the right hand features eighth and sixteenth notes, with some triplets. The bass line consists of eighth and sixteenth notes. Measure 65 ends with a double bar line.

66

Measures 66-70 of a musical score. The melody in the right hand continues with eighth and sixteenth notes, including some triplets. The bass line features eighth and sixteenth notes. Measure 70 ends with a double bar line.

71

Measures 71-75 of a musical score. The melody in the right hand continues with eighth and sixteenth notes, including some triplets. The bass line features eighth and sixteenth notes. Measure 75 ends with a double bar line.

76

Measures 76-80 of a musical score. The melody in the right hand continues with eighth and sixteenth notes, including some triplets. The bass line features eighth and sixteenth notes. Measure 80 ends with a double bar line.